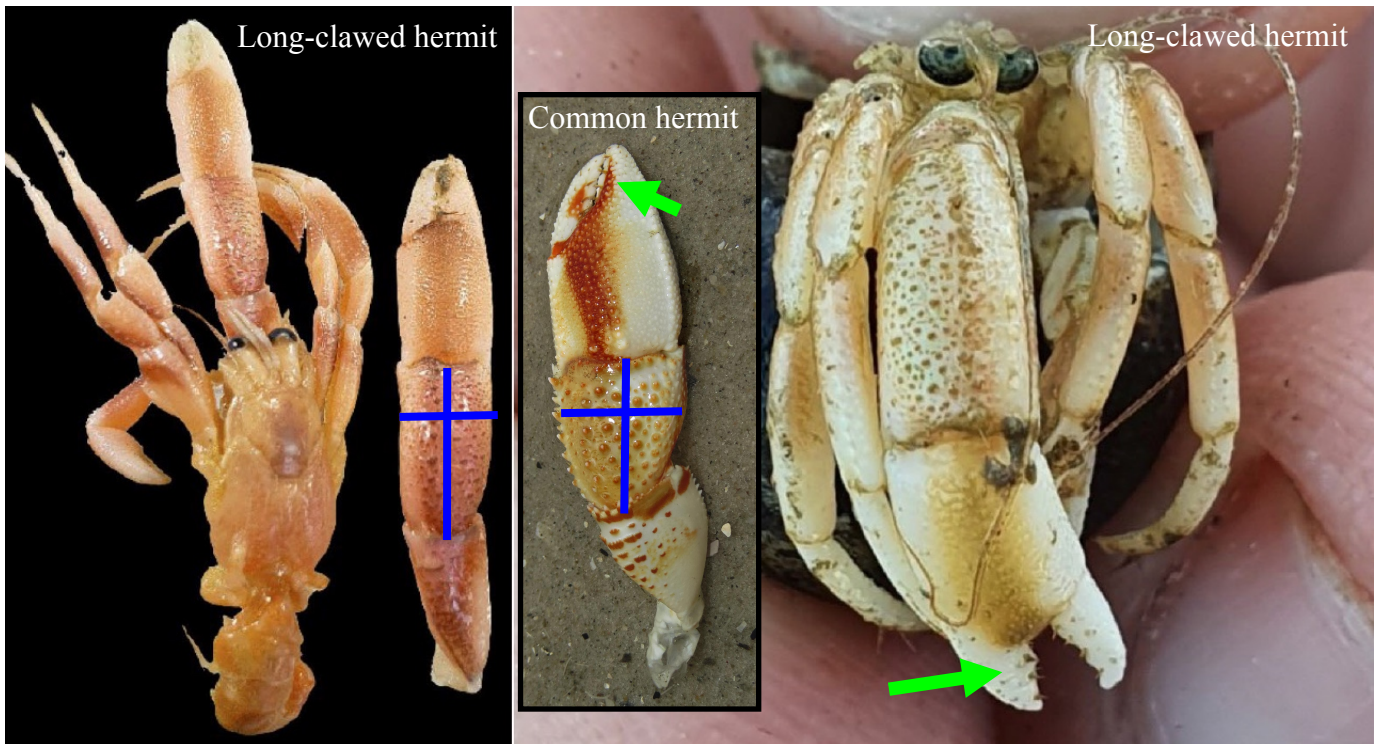


# WANTED!



## New hermit crab from USA

The long-clawed hermit crab (*Pagurus longicarpus*), aka Langarm-Einsiedler / Langhand heremietkreeftje / Langhåndet eremitkrebs

is spreading in the Waddensea, starting from Elbe estuary. The species was discovered in 2020 by Thünen Institute in deeper tidal channels off Dithmarschen. In 2021 it was found already between the north frisian islands.

The species can live on mudflats and might be found here.

Common hermit:

- "arm" stout (blue cross)
- finger of chela with brown line
- left chela without hairs

Long-clawed hermit:

- "arm" slender
- finger of chela white (green arrow)
- left chela with bristles

Please report sightings with picture to [BeachExplorer.org](http://BeachExplorer.org)!